

Do You Understand Your Print Resources?



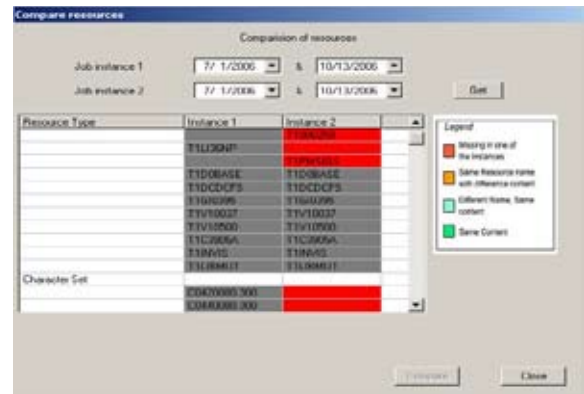
INTRODUCING ENTERPRISE RESOURCE MANAGER

ZenSys, a leading ADF systems integrator, is proud to introduce the 'Enterprise Resource Manager', an easy to use tool to get a handle on your print operations' resource usage. With a unique visualization technique, the tool offers a comprehensive view into an enterprise print operation's resources independent of the print format.

The Enterprise Resource Manager offers a unique view of resources used in a print operation's production jobs. Resources from transaction based printstreams in AFP, Metacode, DJDE/LCDS and PDF format can be collected, summarized and organized into a database for later retrieval, querying and reporting.

The Enterprise Resource Manager supports the notion of a 'Site', 'Applications' and Jobs within an application. Resources of a particular instance of a job are then tagged as belonging to that Job (and Application and Site). Through the Graphical User Interface, the resources can be viewed in a hierarchical 'Explorer' like tree fashion.

Unlock the power of your printstreams and move to the next level of accuracy and control in your production environment with the Enterprise Resource Manager from ZenSys – we save you time and money.



Above: Compare print resources used in disparate jobs using Enterprise Resource Manager.

Key Capabilities:

- Extract resources such as Character Sets, Code Pages, Fonts, Logos etc. from print streams
- Save the actual resources into a comprehensive database such as MS SQL Server or ODBC
- Keep track of which production jobs use which versions of resources
- Provide a Graphical User Interface for a snapshot view or drill down view
- Perform 'Where used' scenario analysis
- Provide an ability to report on Resource usage
- Ability to extract and package a snapshot of resources based on an 'effective date'
- Ability to compare two instances of a Job to determine common resources or missing resources.
- Ability to version control resources

Platform Requirements:

- Windows NT/2000/XP
- 128 Mbytes of RAM

ENTERPRISE RESOURCE MANAGER



MAJOR FEATURES

- Automatically recognize and tag jobs (from JES queues, Infoprint Manager, BARR, Solimar etc.)
- Automatically extract resources from AFP, PDF, Metacode and DJDE/LCDS print streams
- Efficiently store resources in a standard SQL database
- Compare resources usage in two instances of a job. Highlight differences in resource usage
- ‘Where Used’ analysis
- Query for resources by Job, application, resource type and resource name
- Extract and Package resources from different applications, jobs and instances of jobs
- Uniquely and efficiently store resources in a database (any resource is stored only once irrespective of how they are named and referenced)
- Create arbitrary reports on resources, jobs, job instances and applications
- Create and view resources in a ‘user-definable’ hierarchy such as ‘Site -> Application -> Job -> Job Instance’ or ‘Enterprise -> Business Unit -> Workgroup -> Application -> Job -> Job Instance’ etc.
- SQL Server or any other ODBC database compliant.
- Unique ‘area-filling’ visualization of resource usage in jobs and applications.

Below: Enterprise Resource Manager unlocks the resources hidden in your production job files, and enables you visualize, manage and capture resources from your production environment in a graphical and easy to understand manner.

